



# **Industrial Parts & Equipment Inc.**

**1 University Plaza Ste. 410  
Hackensack, NJ 07601**

Industrial Parts & Equipment Inc.  
(I.P.E.)

IPE an exporter of industrial materials, is a unique 'one stop' supplier. IPE is the continuation of a business that began in 1972 in New York City. It is an enterprise that retains a tradition of integrity and reflects a commitment to innovation. Today IPE has the resources and service capabilities of various organizations that represent major manufacturers, fabricators and suppliers from the United States and overseas countries with multimillion-dollar inventories. We have available engineers, product managers, estimators and expeditors whose cumulative experience and multi-lingual talents ensure our customers personalized, professional assistance; a concept of service based on our ability to provide a 'total package requirement' consisting of the finest industrial products at competitive prices.

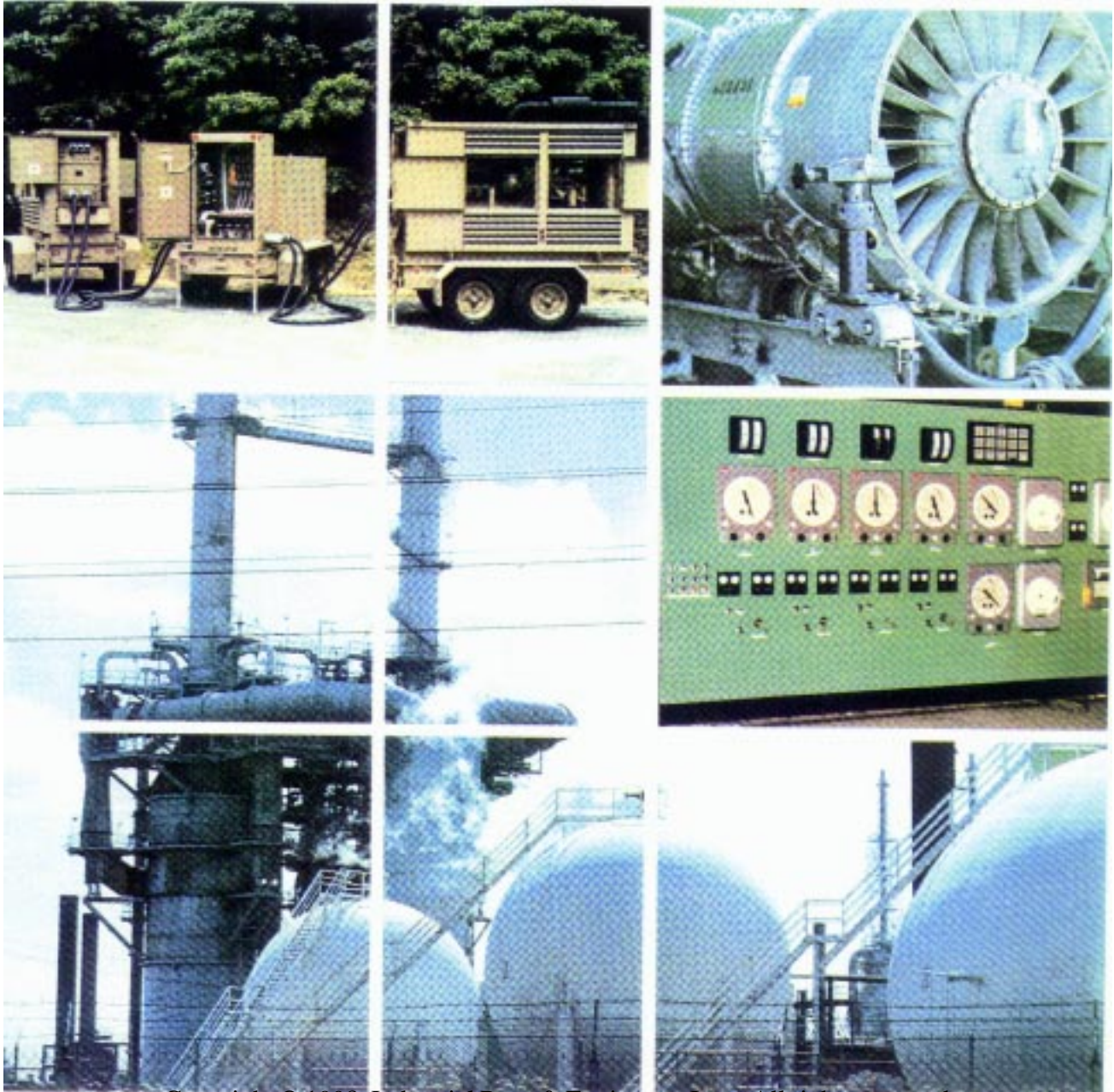
I.P.E. is ...

a service and trading center - with the expertise, technical knowledge, personnel and specialized contacts worldwide that enable us to provide the best merchandise and ship it in the most economical way. IPE offers products drawn from more than 200 top of the line manufacturers. We are the ideal single source for all products from the foundation to the completed project. Whether for extensive modernization or replacement, IPE can supply spare parts for any American built equipment. In addition, we can offer the same service for products and spare parts manufactured in the rest of the industrial world. We have our own offices and associates in such diverse places as England, Germany, France, Japan, Venezuela, Colombia, Brazil, Mexico, and Chile, as well as countries on the African Continent.



I.P.E. considers ...

the prompt and efficient delivery of merchandise among its major priorities. As a long established supplier, our reputation for service excellence is rooted in the swift flow of merchandise from manufacturer to customer. Our extensive telecommunication network enables our Export Dept. & Expeditors to keep in contact with major producers, forwarders and brokers around the globe. Members of our Export and Customer Service Department, fluent in several languages are always up to date on the latest shipping requirements that vary from nation to nation. When all the intricate paperwork and export packing is complete, we direct and supervise the delivery of your merchandise to piers or airports, depending upon the mode of transportation best suited to your needs. Strategic coastal plants and stockyard locations make all shipping facilities equally accessible to us.



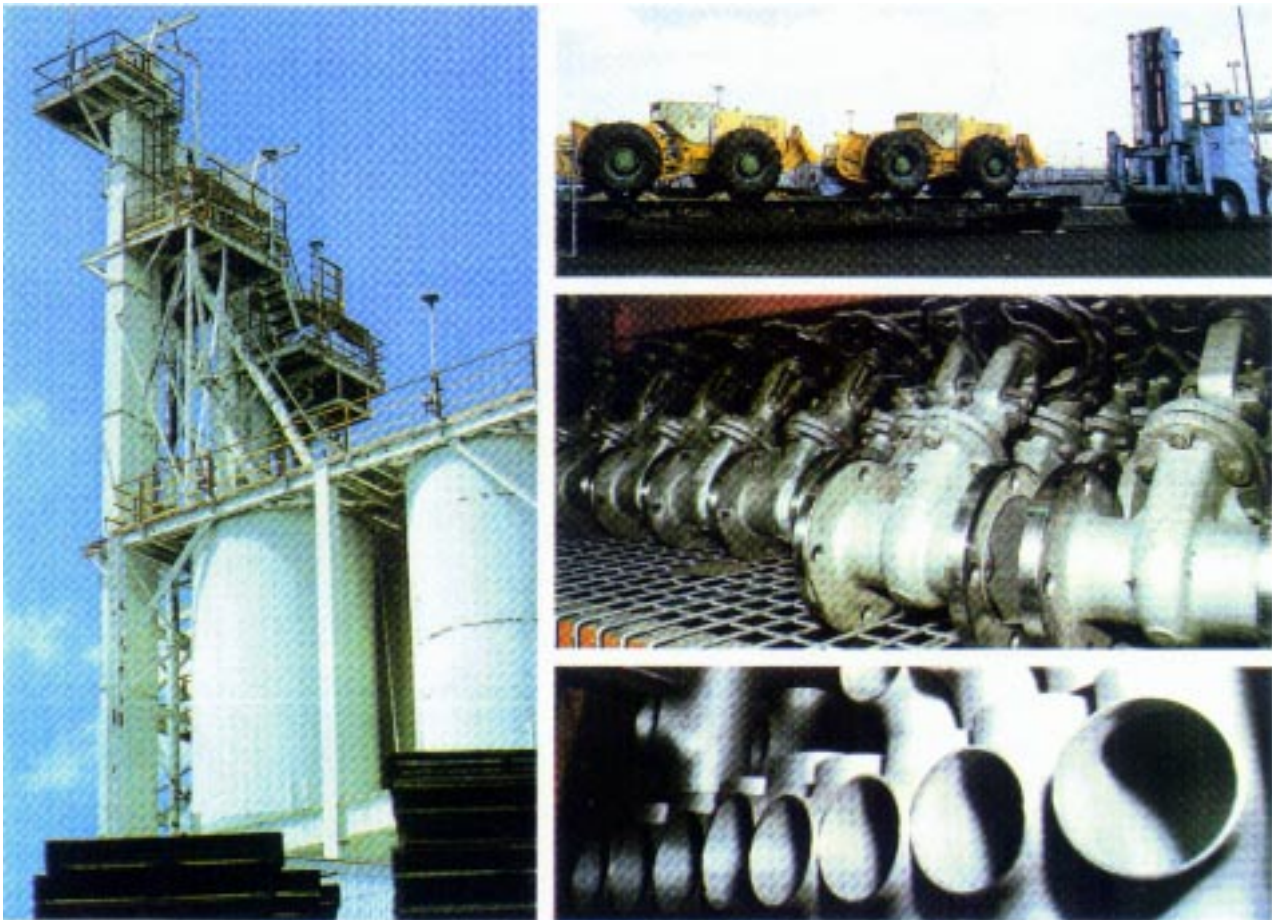
Copyright © 1998, Industrial Parts & Equipment Inc. • All rights reserved

I.P.E. services ...

industries as diverse as the countries in which they're found. Our customers include utilities, hydroelectric complexes, mining, chemical plants, metals refining and steel producing facilities. Our expertise in the International market is second to none.

I.P.E. devotes ...

time and talent to see that your requirements are met from initial order to shipment. When we receive your inquiry our highly trained staff researches your product needs and pursues competitive price quotations. Each order is entered into our data-processing system. Our experienced Export Department is well acquainted with the documents required for international shipment. For those customers that require technical advise our highly skilled engineers are available for consultation. At any point during the fulfillment process, the customer is able to check the status of their order and receive any information concerning its components from our Customer Service Dept.



I.P.E. looks forward ...

to meeting the challenges of industrial diversification in the future. The demand for top-of-the-line industrial products gives us the opportunity to introduce our 'one stop' philosophy of supply and distribution to an ever- expanding marketplace - one that will recognize and depend upon IPE products in much of the world.

